

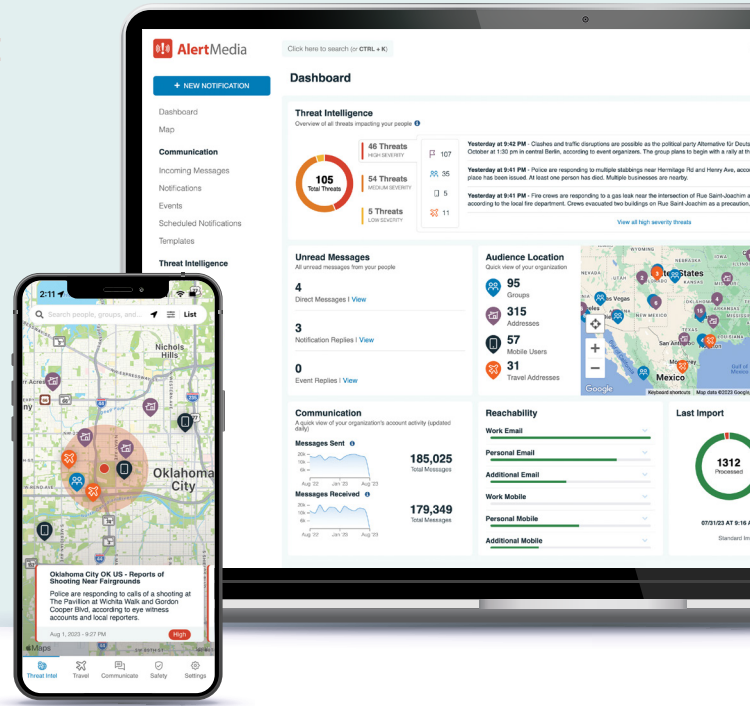


AlertMedia

KEY FEATURE GUIDE

Manage Your Risk and Response From One Platform

Everything you need to protect your people and business.



Threat Intelligence

- Act fast with real-time alerts and a live map view of potential threats.
- Get reliable information you can trust with analyst-vetted intelligence.
- See the full picture of ongoing critical events with Situation Reports and impact assessments.



Emergency Communication

- Reach those at risk quickly and effectively with two-way, multichannel notifications and delivery confirmation.
- Streamline your notification process with customizable templates.
- Create custom audiences in seconds using geofencing and dynamic groups.



Travel Risk Management

- Get alerted to risks impacting traveling employees with localized threat monitoring.
- Easily sync travel data through seamless integrations with your travel management system.
- Prepare employees ahead of time with expert-curated Travel Briefs.

Today's complicated threat landscape demands a robust, reliable solution designed to help your team quickly respond to emerging risks and ensure a positive outcome. AlertMedia offers an integrated system where you can identify threats, assess impact, and manage communication, all from the same intuitive platform. That's why thousands of companies across a range of industries—from Fortune 500 companies to small and mid-size organizations—are turning to AlertMedia.

When you partner with AlertMedia, you're getting the #1 solution trusted by safety and security professionals.



4.8 ★★★★★



4.7 ★★★★★



4.7 ★★★★★

The AlertMedia Difference



Intuitive Interface

Empower admins with a user-friendly system designed for speed.



Full-Featured Mobile App

Monitor threats and communicate from anywhere with a powerful mobile app companion.



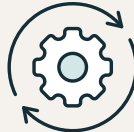
Integrated Platform

Assess and respond to risks in one place without ever having to switch systems.



Scalable Infrastructure

Support any size business with a secure, enterprise-grade system that scales to your needs.



Efficient Implementation

Onboard quickly and easily with personalized implementation services tailored to your organization.



World-Class Support

Experience unparalleled service via a dedicated customer success manager and 24/7 support.

“ AlertMedia allowed us to upgrade our current communication system and combine it with the critical location tracking and threat intelligence capabilities we had been missing, all within a single platform.”

Mark Ellgass, Global Security, International Justice Mission

AlertMedia helps you navigate any incident with confidence.

Detect

Get fast, accurate, and comprehensive alerts for relevant threats to your people and business.

Assess

Understand exactly how an emergency will impact your facilities, employees, and operations.

Respond

Keep your employees informed during an incident through a variety of communication channels.



Detect Incidents Instantly

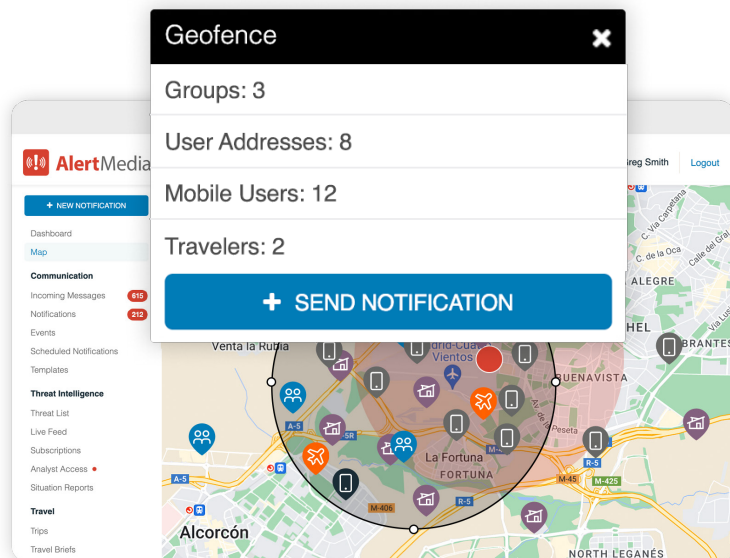
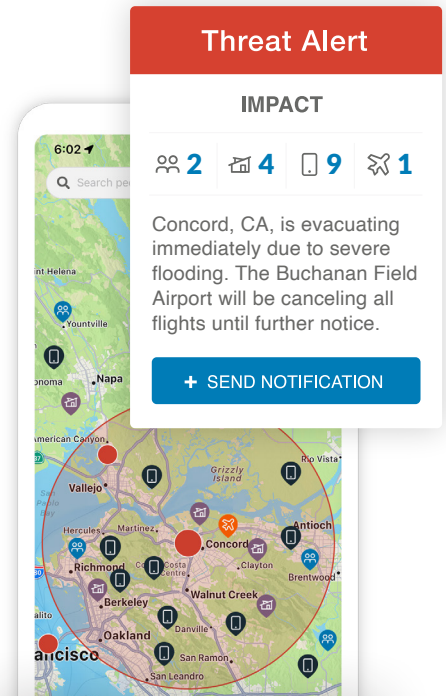
AlertMedia provides fast, accurate, and comprehensive alerts for relevant threats to your business.

Immediate and relevant threat alerts

- Get real-time alerts for threats facing your people and facilities—including remote and traveling employees, lone workers, job sites, supply chain partners, and more.
- Choose when and how you want to be alerted to emerging risks or automate notifications to go directly to impacted employees for time-sensitive incidents.

Reliable threat intelligence you can trust

- Avoid false alarms or misinformation with human-vetted intelligence from experienced analysts.
- Prevent missed information and notification fatigue through custom threat subscriptions designed to surface only the alerts relevant to your people and business.



Global, comprehensive threat intelligence

- Visualize global and local events in real-time to assess your risk exposure.
- Operate with confidence, covering threats around the world across key categories:
 - Weather events and natural disasters
 - Active events (riots, crime, active shooters, etc.)
 - Planned events (protests, demonstrations, etc.)

“By far, AlertMedia’s combination of high-speed notifications and threat intelligence has proved to be the most agile tool we’ve used to date.”

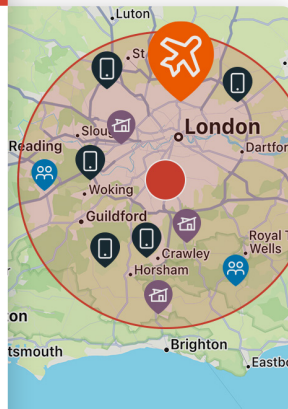
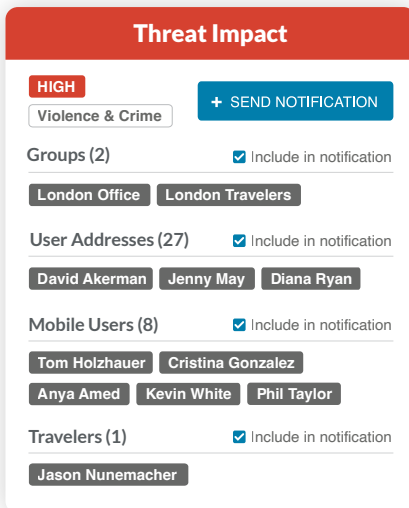
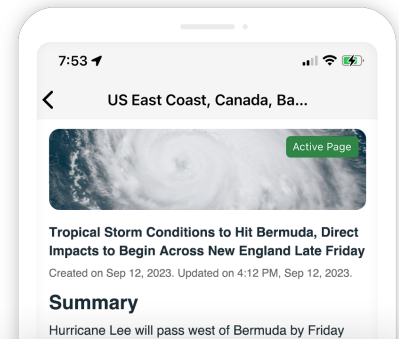
Penny Neferis, Director of Business Continuity and Emergency Response, JetBlue

Assess Threats Accurately

AlertMedia enables a quick assessment of people and facilities in the impact zone of a potential threat.

Threat monitoring of all your essential locations

- See what locations are affected by a potential threat.
- Brief traveling employees for a safe trip and know when travelers are in the impact zone of an active event.
- Get alerts for at-risk employees based on their current location.



Live map view of risks impacting your people and assets

- View active events on the live Threat Intelligence Map to see exactly which employees, facilities, and travelers are in the range of impact.
- Set up geofencing around critical operation centers, such as suppliers or temporary job sites, to get the full scope of business continuity impacts.

Direct access to expert analysts 24/7

- Dig deeper into the impact of an emergency and get tailored intelligence from our expert threat analysts within minutes.
- Access Threat History reports to better assess future threats for any given location.

- AB** Anita 2:10 PM
Looking for more info on the Gas Leak on State Street. Sounds like an 18 engine response how serious is this?
- AlertMedia** 2:14 PM
As of about three minutes ago, [fire authorities](#) were able to secure the gas leak. They are checking air quality levels in the area as a safety precaution.

“ With real-time insights automatically pushed to our safety leaders around the clock, we can more effectively identify the most impactful events happening near our people and instantly notify at-risk employees.”

Gianetta Jones, VP and Chief People Officer, Coca-Cola UNITED

Respond Rapidly With Confidence

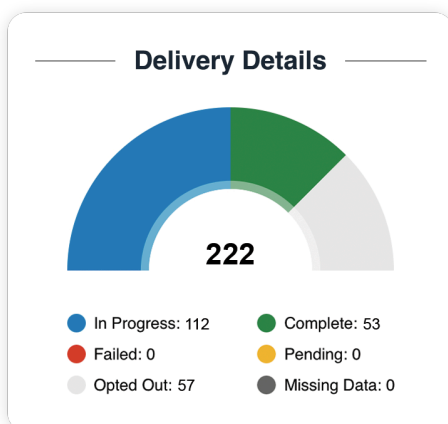
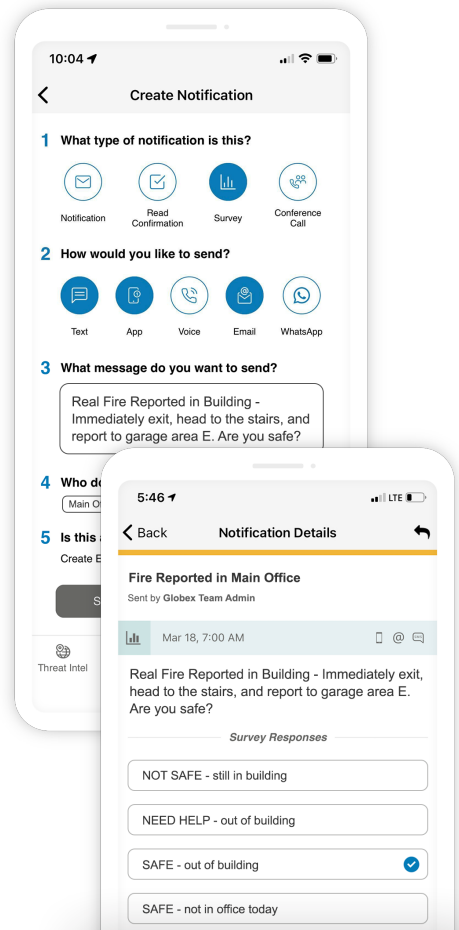
AlertMedia lets you notify those at risk in seconds to convey critical information and coordinate your response.

Simple messaging interface to alert all employees at risk

- Maximize the reach of your message through multiple communication channels, all from one streamlined interface.
 - Text/SMS
 - Voice call
 - Slack
 - Microsoft Teams
 - WhatsApp
 - Desktop takeovers
 - Digital signage
 - Custom devices
- Deploy messages in just a few clicks with pre-built notification templates.
- Include threat details and impact details automatically in notifications to affected individuals.

Different alert types for different communication needs

- **Broadcast Alerts:** Send one-way messages with important information.
- **Read Confirmation Alerts:** See who has received alerts immediately.
- **Surveys:** Confirm status and engage employees with two-way communication features.
- **Desktop Alerts:** Use on-screen notifications to alert employees at their work stations.
- **Conference Calls:** Gather key stakeholders in seconds to coordinate your response over a voice call.



Scalable administration settings and analytics to support any size business

- Set up custom permissions that empower your leaders to manage their teams' safety.
- Ensure messages reach the right people by automatically grouping employees with common characteristics, such as location or department.
- Instantly track message delivery and audience responses.
- Monitor and audit account activity through robust reporting.

Platform Capabilities

Accessible, secure, and connected platform for all your safety and security needs.

- ✓ Single sign-on with automatic user provisioning
- ✓ Full-featured mobile app
- ✓ Enterprise-grade data security
- ✓ API Access
- ✓ Data syncing via Active Directory, CSV files, or SFTP
- ✓ Turnkey integrations for Travel Risk Management with platforms such as SAP Concur, Navan, Egencia, American Express GBT, and more



"The AlertMedia toolset fits well within our overall architecture and toolset stack. It helps us have a viable, predictable, and integrated way to communicate with our teammates."

George Henry, VP of Enterprise Architecture, Imaging Business Machines

AlertMedia is your partner in organizational resilience.

When it comes to protecting your employees and ensuring business continuity, you need a partner you can trust. AlertMedia offers a unified solution that's reliable, secure, and built for efficiency—providing everything you need to navigate any crisis and ensure a positive outcome for your people and business.



NAVIENT



American Red Cross



Wellstar HEALTH SYSTEM

jetBlue



CROWDSTRIKE



zoom

bpx energy

Builders FirstSource

zendesk



Learn how AlertMedia can help you keep your people safe, informed, and connected during critical events.

sales@alertmedia.com // (800) 826-0777 // alertmedia.com

SCHEDULE A DEMO