



Threat Intelligence

Protect your people and business from nearby threats with actionable, analyst-vetted intelligence.

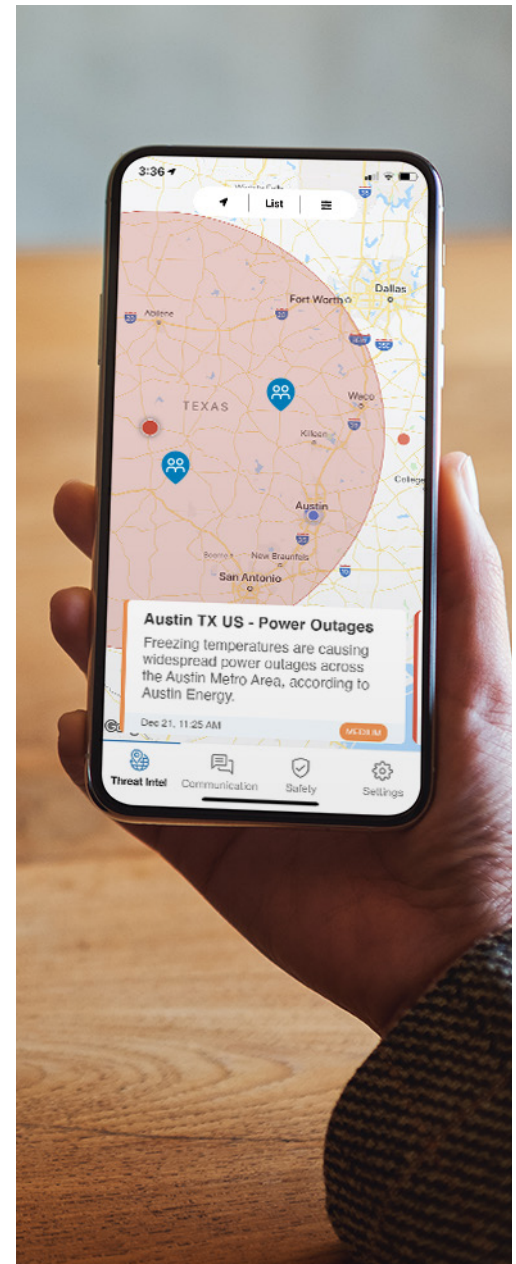


Elevate Emergency Preparedness with Faster, Verified Threat Intelligence

During an emergency, speed and accuracy are critical. AlertMedia helps you identify threats happening near your people, assets, and locations in real time. By combining verified, up-to-date intelligence with your location data, we'll help you accelerate response times and make decisions with the best available information.

Safety and business continuity teams face an unprecedented set of challenges. From the pandemic to severe weather events, disasters, and other disruptions, organizations must prepare for a wide range of threats with the potential to impact employee safety and business operations. For many, this means building costly internal intelligence gathering processes to provide around the clock coverage, sifting through volumes of unstructured information from disparate data sources, and tediously tuning out the noise to identify what's relevant to the business.

Our threat intelligence solution helps organizations of all sizes accelerate response times and deliver real-time insight about critical events with the potential to impact your people and assets. Whether you have a small security team or a large security operations center, we can help your team identify and verify incidents faster, analyze the business impact, and automatically activate a response across your organization with real-time alerts. By combining human-verified intelligence from thousands of trusted data sources, we'll ensure your organization knows precisely which threats pose a safety or operational risk and help you get timely, accurate, and relevant information to those that need it.



“Getting real-time alerts when an incident happens near one of our sites and seeing exactly who might be impacted allows us to act faster in any situation. AlertMedia has allowed us to enhance employee safety, improve business continuity, and give our employees peace of mind knowing that we are always looking out for them.”

Judy Weber, VP of Operations and Ambition Boost at Thales Group

AlertMedia offers the fastest, analyst-vetted intelligence on a wide variety of threats to your people and business.

We gather intelligence from thousands of public and private sources to surface the earliest signs of any incident that has the potential to impact your employees' safety or business operations.

Security Incidents



- Active shooters
- Structure fires
- School/building evacuations
- Demonstrations
- Criminal activity
- Suspicious packages
- Civil unrest
- Terrorism

Health & Environment



- Hazmat (gas or chemical leaks)
- Disease outbreaks
- Air quality
- Wildfires
- Earthquakes
- Tsunamis
- Volcanic activity
- Boil water notices

Severe Weather



- Regional forecasts
- Watches and warnings
- Winter storms
- Tropical storms
- Tornadoes
- Hurricanes
- Heavy rainfall
- Flooding
- Extreme temps
- Wind and dust

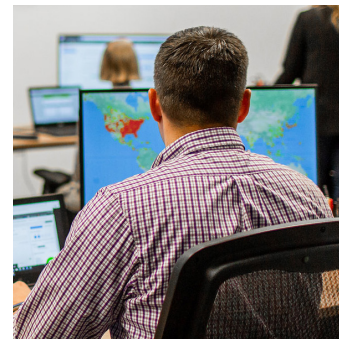
Disruptive Events



- Highway closures
- Public transit closures
- Airport closures
- Derailments
- Plane crashes
- Power outages
- Technology outages
- Planned events

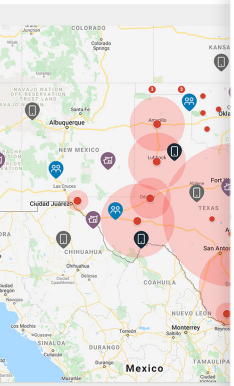
Strengthen Your Internal Security Operations With Around-the-Clock Analyst Support

AlertMedia's 24/7 intelligence center is staffed by highly-trained analysts with decades of experience monitoring and analyzing threat intelligence for government agencies—including the CIA, FBI, and U.S. Army—and the world's largest corporations. With AlertMedia, you gain a trusted source of intelligence to keep people safe and your business running.



- **Coverage:** our team monitors the world 24/7 to identify incidents on a local and global scale
- **Noise-free:** we quickly sift through all available open source data to identify real threats
- **Verification:** we vet source credibility to weed out misinformation and provide context and location
- **Speed:** our unique combination of expertise and specialized tools allow us to vet and deliver accurate intel within minutes of the first signal

A Comprehensive Solution for Faster Threat Detection & Response






Threat Alert

Severity: MEDIUM *2 minutes ago*

Category: Environment

IMPACT

 **5**
 **155**
 **86**

Threat of wildfires continues for the western region, US, through November. Transport and utility disruptions, and evacuations possible.

+ SEND NOTIFICATION

DETECTION

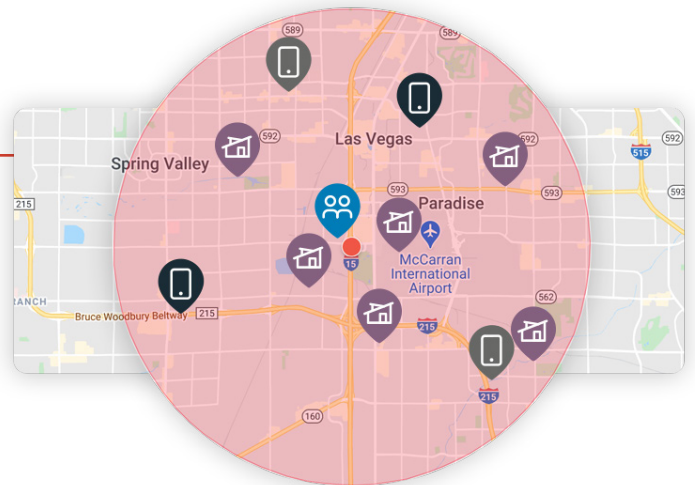
Identify threats in real time

Our intelligence team works around the clock to monitor thousands of public, private, and dark web data sources to identify early signs of an active threat, weed out misinformation, and corroborate details about unfolding events.

ASSESSMENT

Immediately understand your exposure

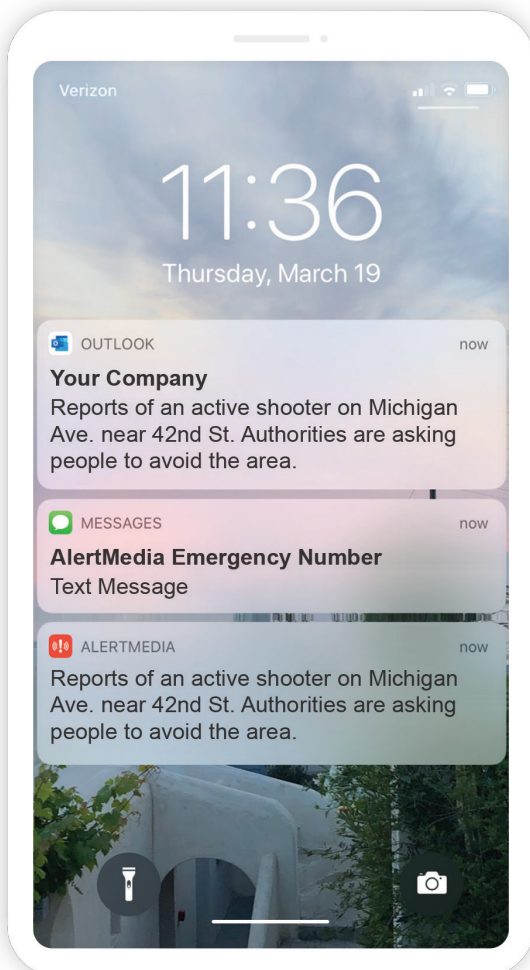
Our real-time impact assessment gives you a clear picture of emergent threats and your organization's exposure based on the locations of your people and assets.



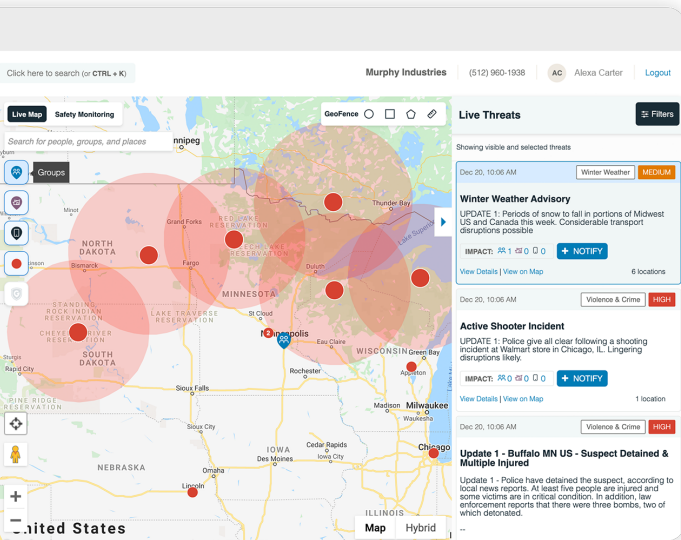
RESPONSE

Streamline workflows for a faster response

Turn intel into action with a solution that allows you to automate real-time warnings to safety leaders or individuals close to a threat, escalate intel to response teams, communicate updates throughout an incident, and perform wellness checks to confirm employees' status.

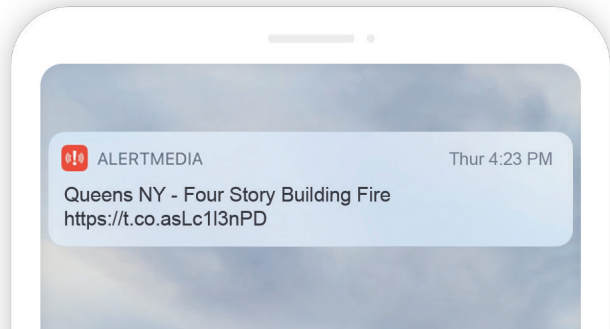


Actionable Intelligence Delivered When and Where You Need It



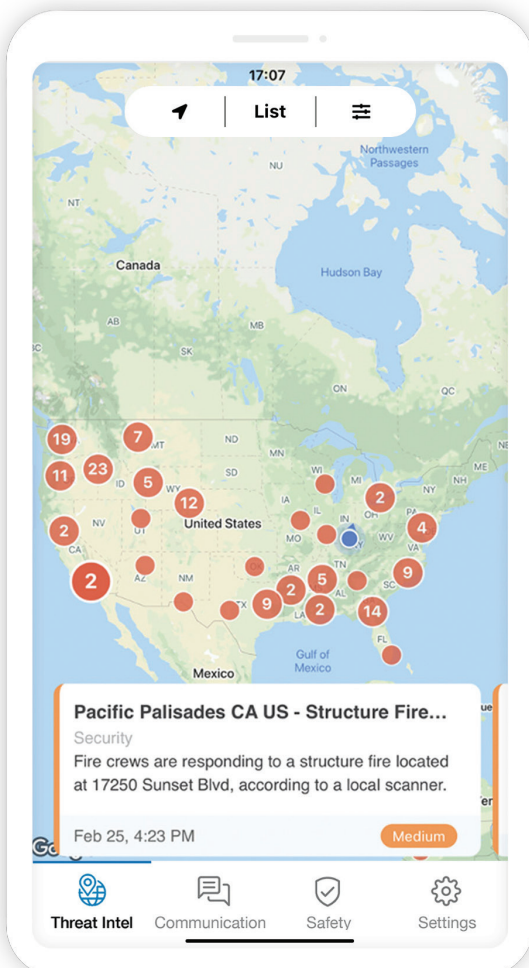
Web Dashboard

Monitor threats near your people, locations, and assets from the web dashboard.



Real-Time Warnings

Automate real-time warnings over text, email, or mobile app to response teams or impacted employees.



Mobile App

Give admins and employees the ability to see emergent threats near them on a dynamic mobile map.

API

Access our Threat Intelligence data via API to pull into your own systems for monitoring.

API Integrations
Add New

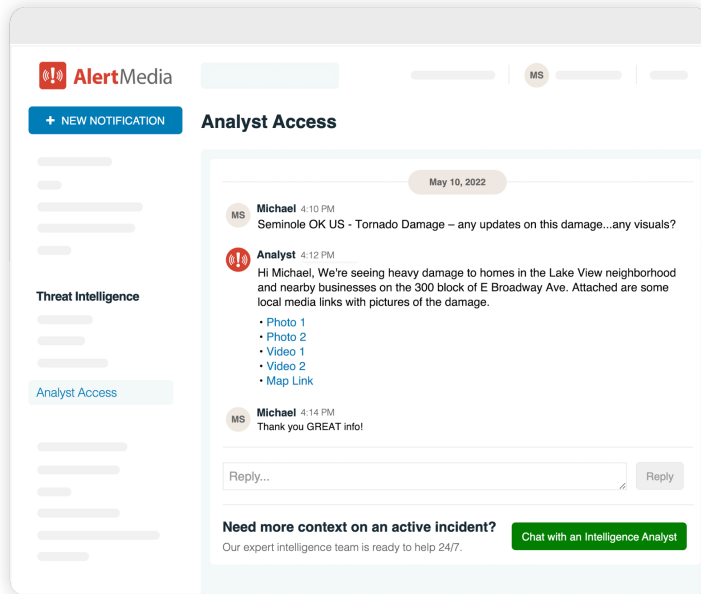
New API Integration

API INTEGRATION NAME *	<input type="text" value="Name"/>
LINKED TO *	<input type="text" value="Search Admins"/>
CLIENT ID	Save to generate your unique Client ID
CLIENT SECRET KEY	Save to generate your Secret Key
CLIENT TOKEN	Save to generate your Token

Cancel
Generate Keys and Save

The Only Solution That Provides More Than Just a Signal

Gain direct access to our global intelligence team and prepare ahead of major planned events and severe weather with analyst-curated resources.



Get The Facts Faster With Analyst Access

Understanding how a developing situation could impact your business is challenging without reliable information. Instant access to a team of expert analysts helps you get the context you need to respond with confidence.

- Accelerate your ability to vet and gather context with 24/7 access to our global intelligence team via chat
- Ask questions about an alert or a signal from another source to confirm the details expected from stakeholders
- Explore previous discussions on an active event and collaborate with other impacted organizations

“AlertMedia’s Analyst Access is a powerful way for us to gather credible context faster on local incidents and react effectively. Having trained experts on hand around the clock helps boost our capacity to keep our people safe and informed.”

Mark French, Chief Human Resources Officer, Dalkia Energy Solutions

Weekly Threat Intelligence Briefs

Get ahead of events happening around the world with the potential to impact employee safety or business operations.

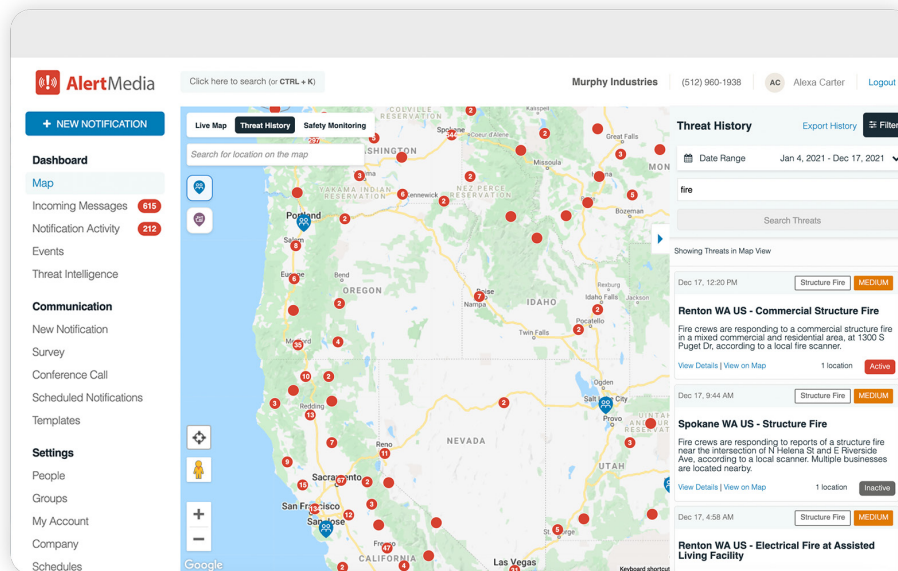
- Major planned events
- Demonstrations and protests
- Infrastructure and supply chain disruptions
- Health crisis and travel advisories



Live Weather Forecast Briefings

Gain valuable insights from our on-staff meteorologist team to help you prepare ahead of major weather events like hurricanes, winter storms, and more.

- Coverage before and during
- In-depth forecast analysis
- Localized impact predictions
- Q&A with our meteorologist



Historical Threat Insights

Provide teams with the ability to run reports customizable by timeframe, region, and incident category to streamline post-event reporting, internal security briefings, and risk assessment research.

“ Our Security team can’t be everywhere at once. AlertMedia’s threat intelligence allows them to see all the potential threats across our footprint. With real-time insights automatically pushed to our safety leaders around the clock, we can more effectively identify the most impactful events happening near our people and instantly notify at-risk employees.”

Gianetta Jones, VP and Chief People Officer of Coca-Cola UNITED

One Intuitive Platform for Threat Intelligence and Emergency Communication



Faster, analyst-
vetted intelligence
delivers facts
without the noise



24/7 coverage of
local incidents,
global events, and
severe weather



Automated impact
assessment using static
and dynamic location data
for people and assets



Real-time
warnings delivered
to impacted groups
over any channel



Streamlined response
workflows for
communication and
wellness checks



Dynamic visualization
of people, locations,
and threat intelligence
on any device

Thousands of Organizations Have Strengthened Their Emergency Response Efforts With AlertMedia





A Complete Safety Solution for Protecting Your People and Business

AlertMedia helps you identify threats and communicate faster during emergencies and unplanned events.

Threat Alert

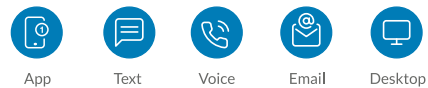
IMPACT

2 27 8

Walnut Creek, CA, a magnitude 4.5 earthquake has hit northern regions of CA. Take caution. Potential aftershocks and landslides are possible.

+ SEND NOTIFICATION

How would you like to send?



What message do you want to send?

You are in the projected path of the hurricane. Please evacuate now.

Who do you want to send this to?

☒ Miami Office ☒ FL Contractors

Send Now >

Threat Intelligence

Identify emergent threats to your people and business faster and respond in real time with automated impact assessments and warnings.

Emergency Communication

Communicate faster during emergencies and business-critical events with multichannel notifications and two-way communication features.

ACCELERATE YOUR EMERGENCY RESPONSE WITH ACTIONABLE INTELLIGENCE

sales@alertmedia.com // (800) 826-0777 // alertmedia.com

GET A DEMO